

Selection for Domestic Projects

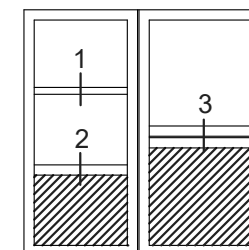
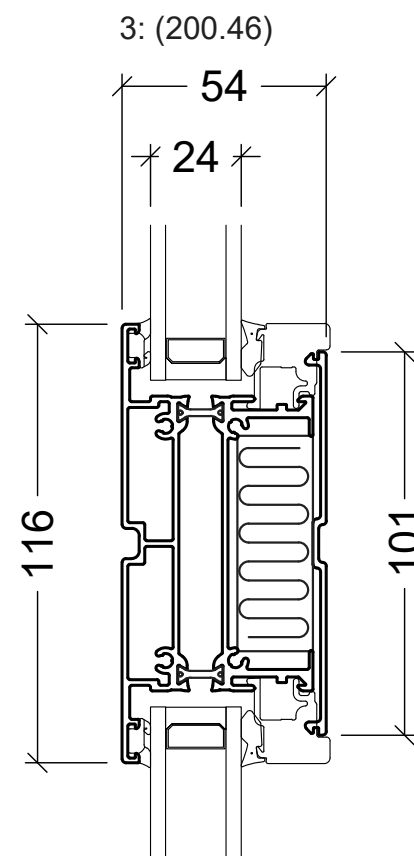
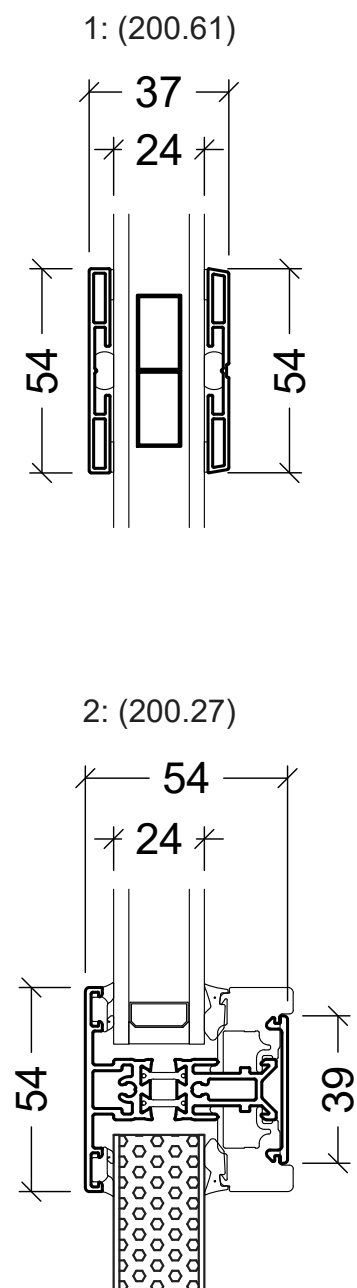
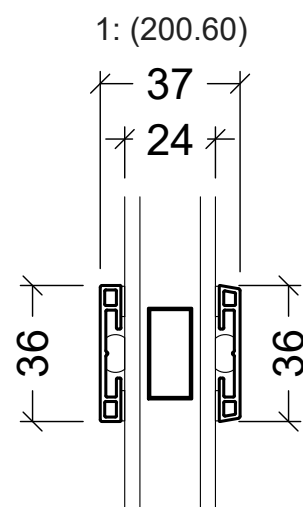


VELFAC is a trademark of DOVISTA A/S

System: VELFAC 200 alu  
English: Standard details  
Dansk: -

Scale: 1:2 / 1:40  
Edition No. 03  
09.23 © 1985, 2023

© DOVISTA A/S, CVR-no. 21147583. All intellectual property rights, copyright as well as all rights in know-how vest in DOVISTA A/S. This drawing may not be reproduced, stored, or transmitted in any form by any means (electronic, mechanical, photocopying, recording or otherwise) without the prior written consent of DOVISTA A/S. This drawing is to be used only for the purposes specified by DOVISTA A/S and for no other purpose. We reserve all rights to change the product and product range without notice.



Selection for Domestic Projects

**VELFAC®**

VELFAC is a trademark of DOVISTA A/S

System: VELFAC 200 alu

English: Glazing bars

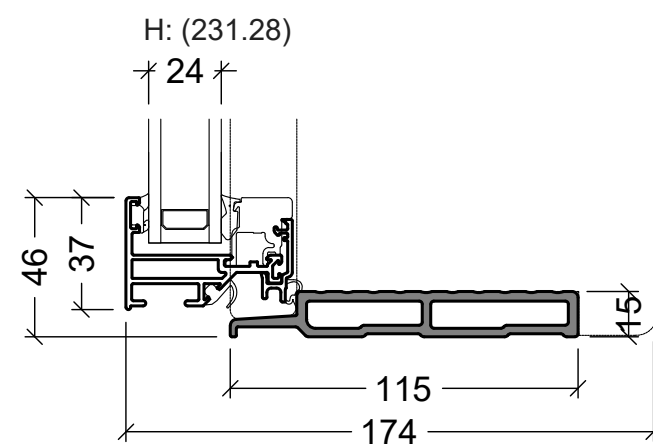
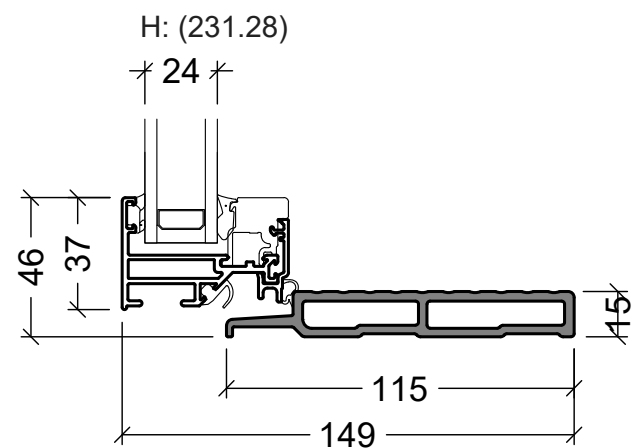
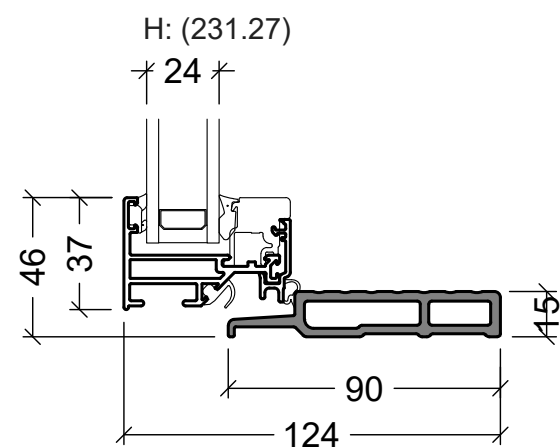
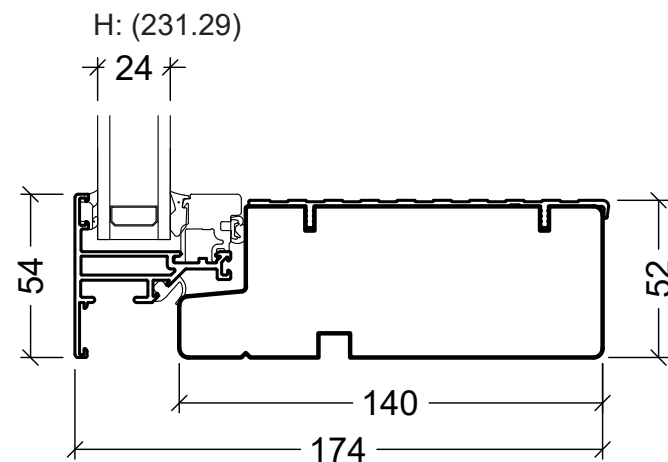
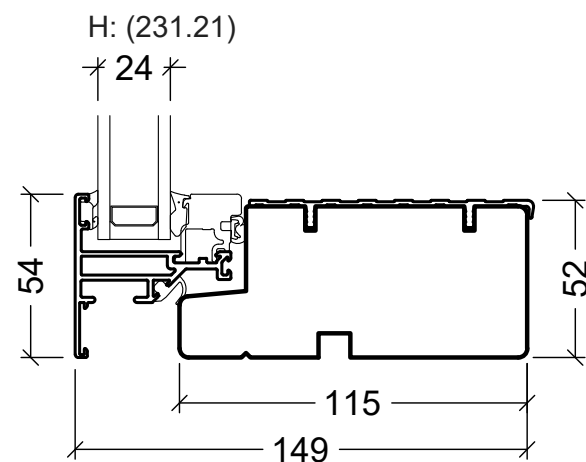
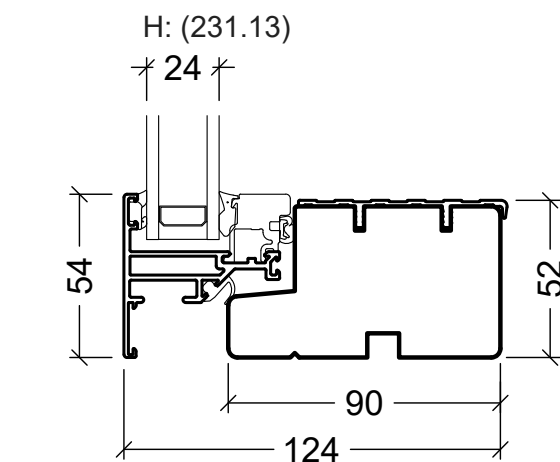
Dansk: -

Scale: 1:2 / 1:40

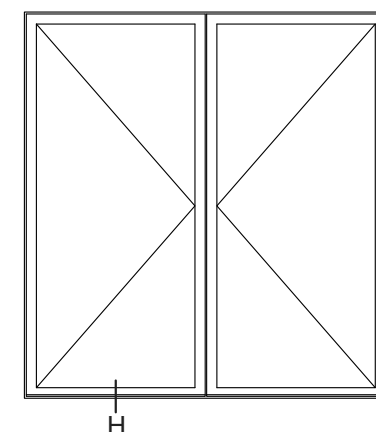
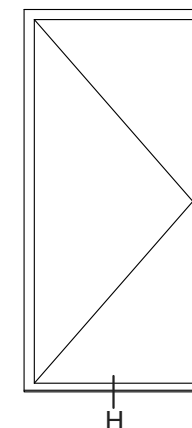
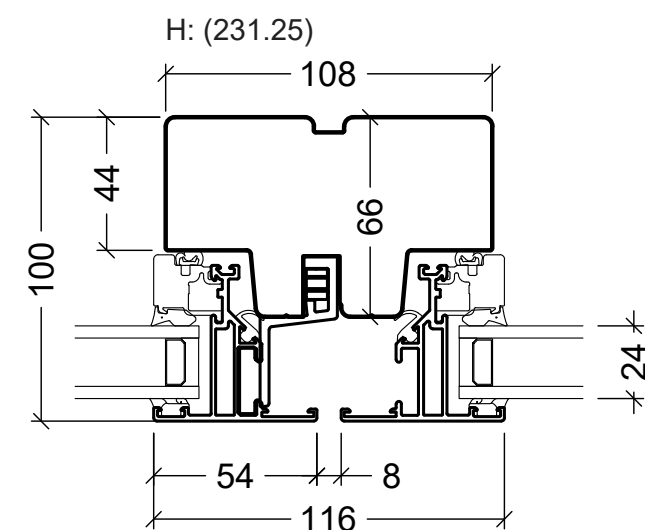
Edition No. 03

09.23 © 1985, 2023

© DOVISTA A/S, CVR-no. 21147583. All intellectual property rights, copyright as well as all rights in know-how vest in DOVISTA A/S. This drawing may not be reproduced, stored, or transmitted in any form by any means (electronic, mechanical, photocopying, recording or otherwise) without the prior written consent of DOVISTA A/S. This drawing is to be used only for the purposes specified by DOVISTA A/S and for no other purpose. We reserve all rights to change the product and product range without notice.



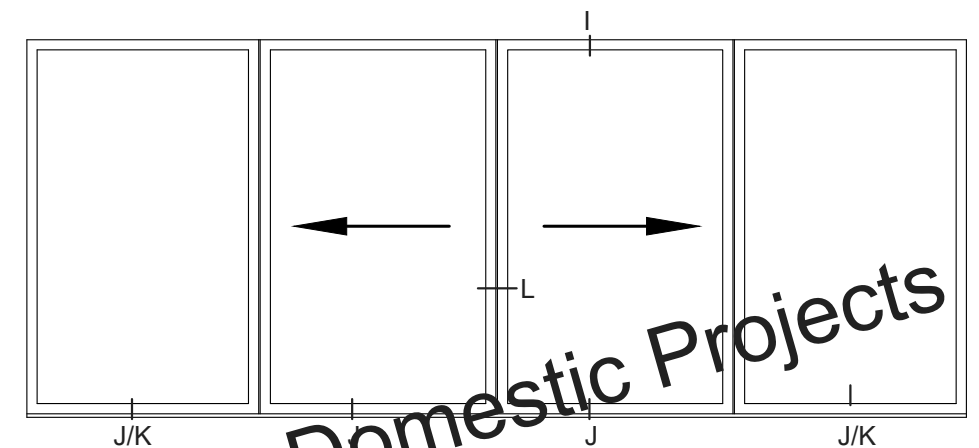
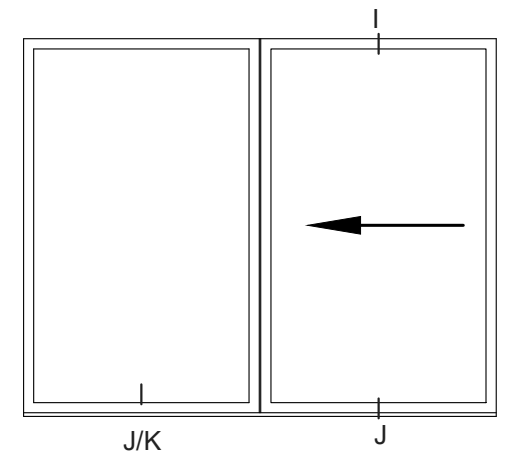
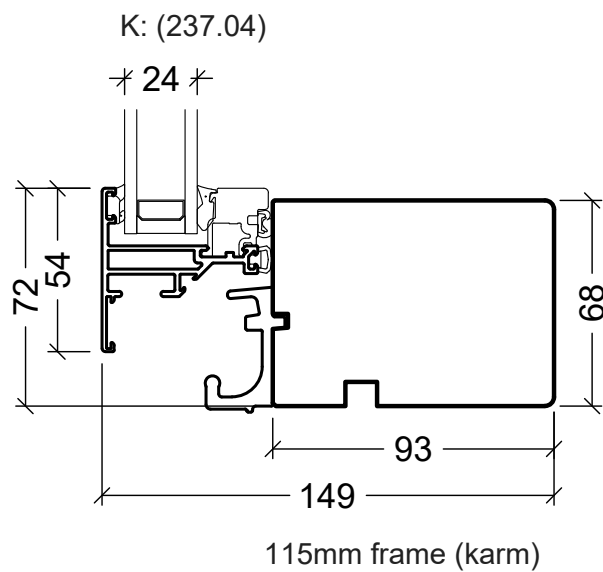
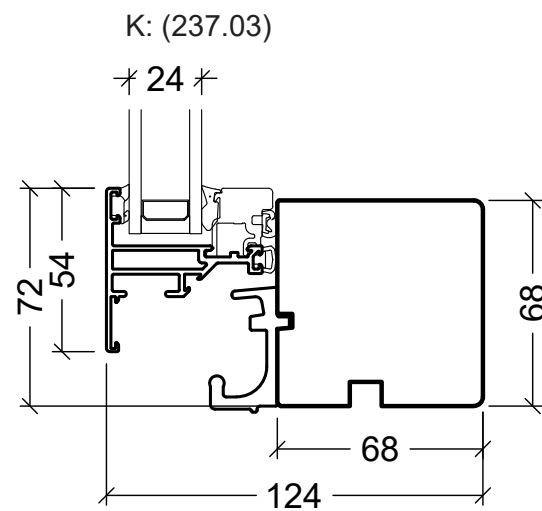
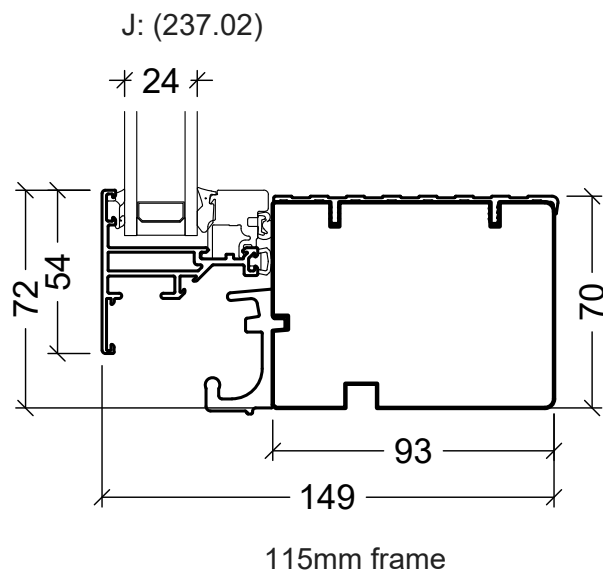
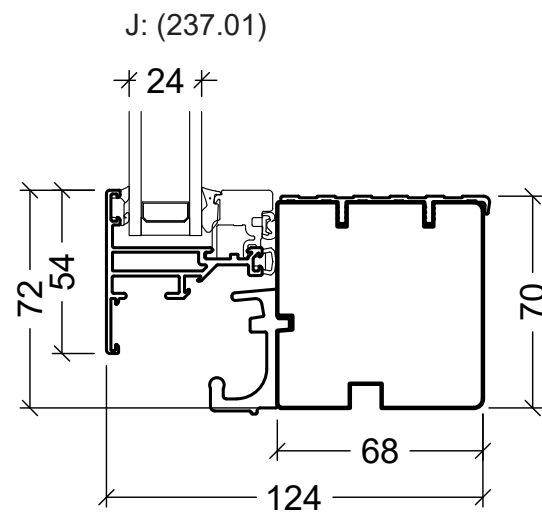
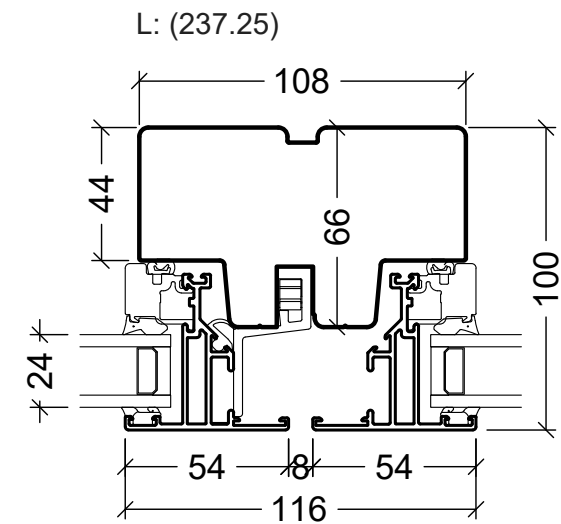
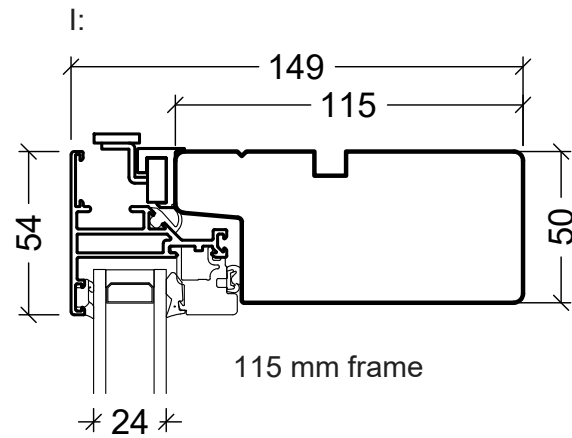
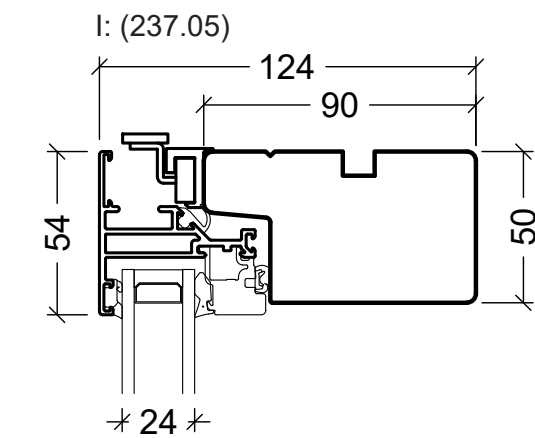
140mm frame



Selection for Domestic Projects

Specific details for casement door, details - see tab VELFAC 200 alu standard details

<b>VELFAC®</b> VELFAC is a trademark of DOVISTA A/S	System: VELFAC 200 alu English: Casement door Dansk: -	Scale: 1:2,5 / 1:40 Edition No. 03 09.23 © 1985, 2023
	© DOVISTA A/S, CVR-no. 21147583. All intellectual property rights, copyright as well as all rights in know-how vest in DOVISTA A/S. This drawing may not be reproduced, stored, or transmitted in any form by any means (electronic, mechanical, photocopying, recording or otherwise) without the prior written consent of DOVISTA A/S. This drawing is to be used only for the purposes specified by DOVISTA A/S and for no other purpose. We reserve all rights to change the product and product range without notice.	

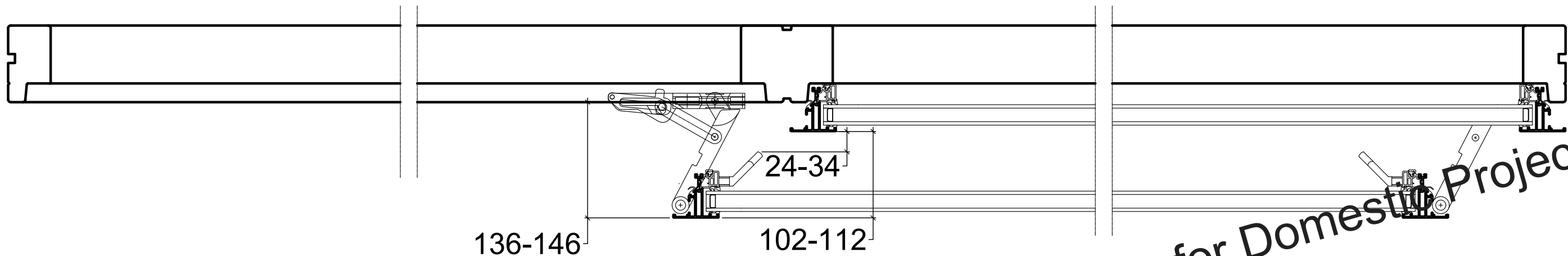
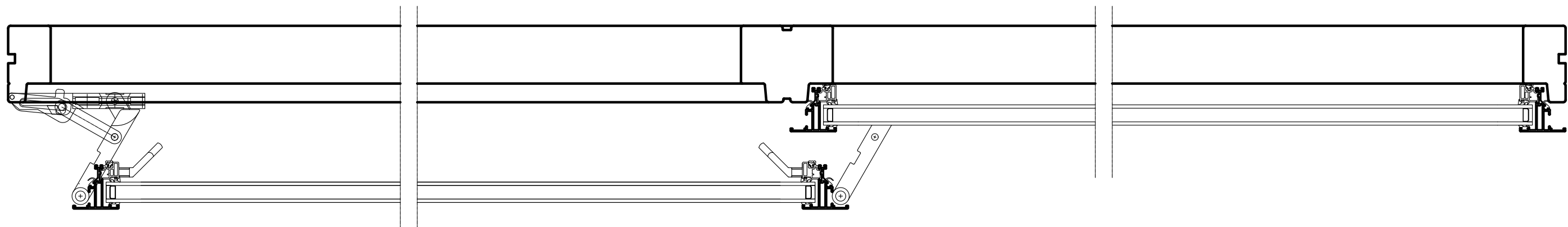
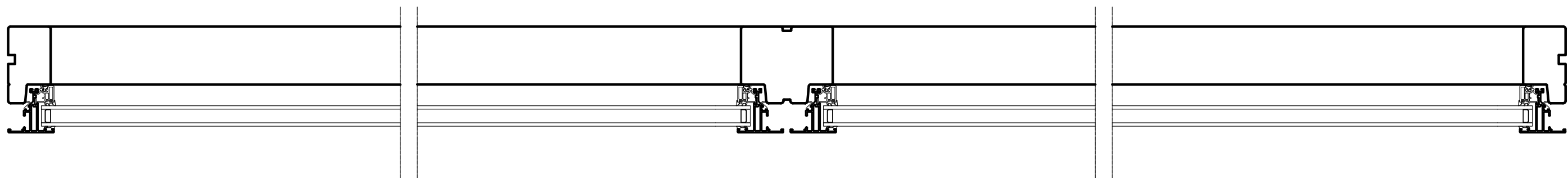


Only as fixed sidelight for sliding casement door

Specific details for sliding casement door, other details  
- see tab VELFAC 200 alu standard details

Selection for Domestic Projects

<b>VELFAC®</b> <small>VELFAC is a trademark of DOVISTA A/S</small>	System: VELFAC 200 alu	Scale: 1:2,5 / 1:40
	English: Sliding casement door	Edition No. 03
	Dansk: -	09.23 © 1985, 2023
<small>© DOVISTA A/S, CVR-no. 21147583. All intellectual property rights, copyright as well as all rights in know-how vest in DOVISTA A/S. This drawing may not be reproduced, stored, or transmitted in any form by any means (electronic, mechanical, photocopying, recording or otherwise) without the prior written consent of DOVISTA A/S. This drawing is to be used only for the purposes specified by DOVISTA A/S and for no other purpose. We reserve all rights to change the product and product range without notice.</small>		



Selection for Domestic Projects

**VELFAC®**

VELFAC is a trademark of DOVISTA A/S

System: VELFAC 200 alu

English: Sliding casement door, function

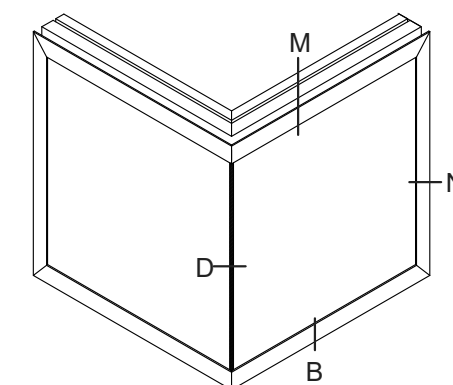
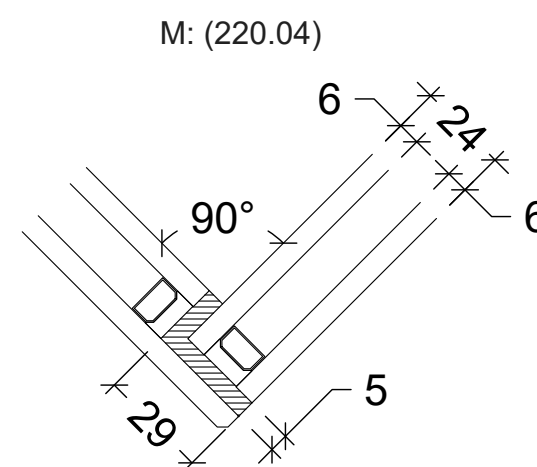
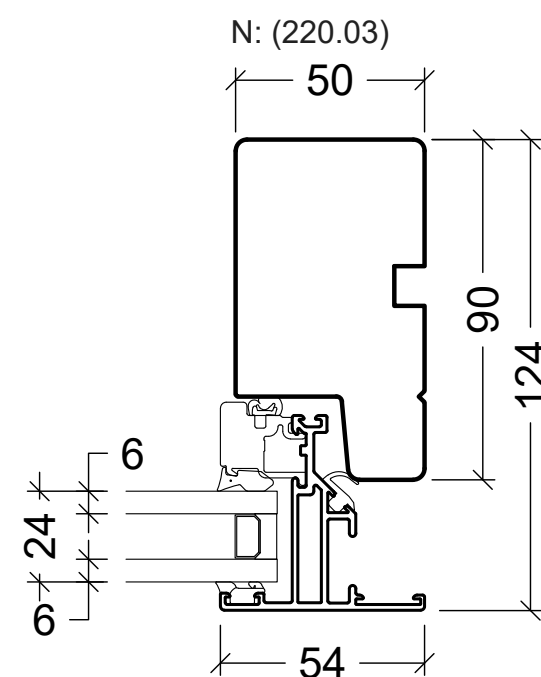
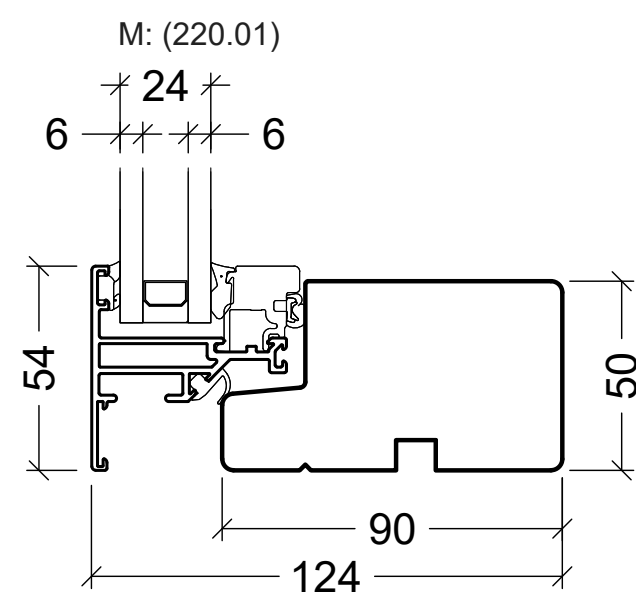
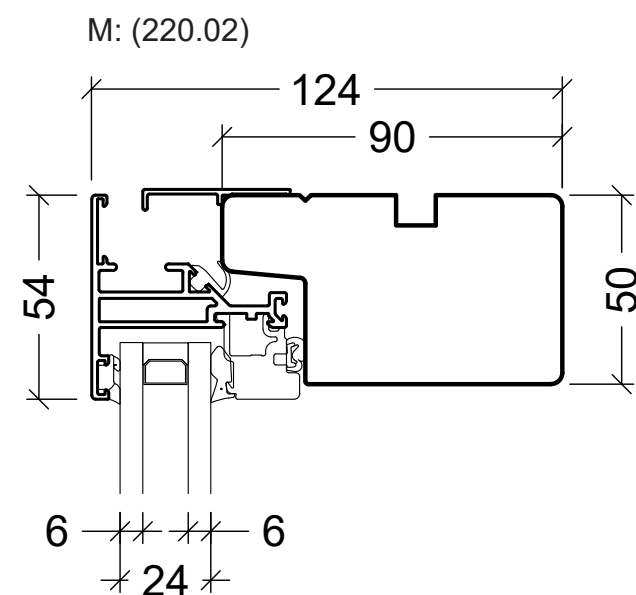
Dansk: -

Scale: 1:5

Edition No. 03


09.23 © 1985, 2023

© DOVISTA A/S, CVR-no. 21147583. All intellectual property rights, copyright as well as all rights in know-how vest in DOVISTA A/S.  
This drawing may not be reproduced, stored, or transmitted in any form by any means (electronic, mechanical, photocopying, recording or otherwise) without the prior written consent of DOVISTA A/S. This drawing is to be used only for the purposes specified by DOVISTA A/S and for no other purpose.  
We reserve all rights to change the product and product range without notice.



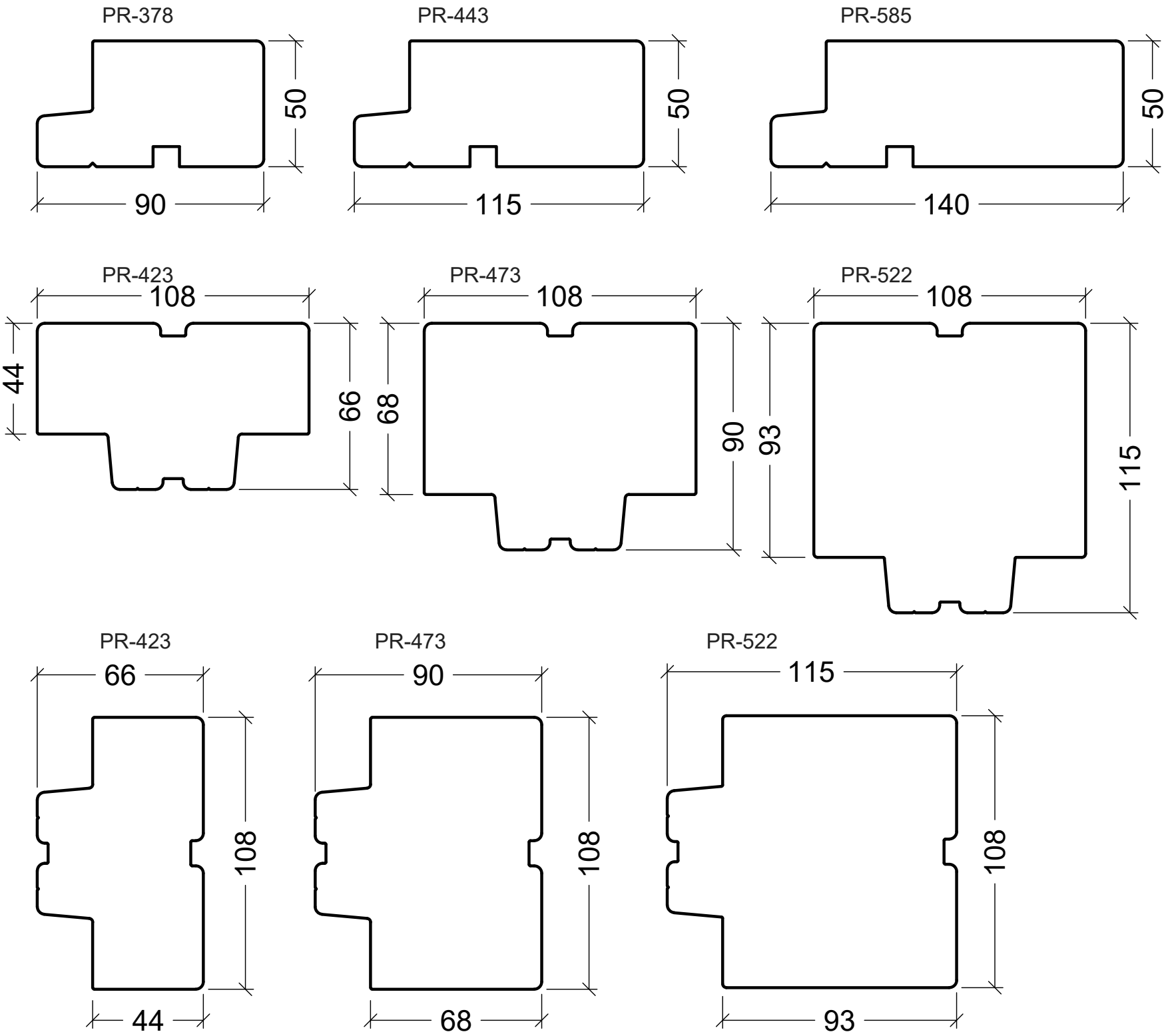
Specific details for corner windows, other details - see tab  
VELFAC 200 alu standard details

Selection for Domestic Projects

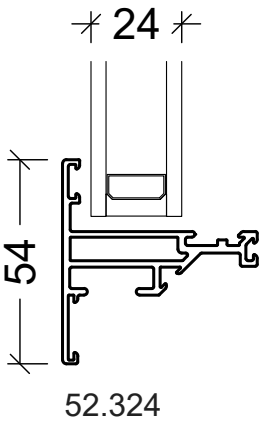
 VELFAC is a trademark of DOVISTA A/S	System: VELFAC 200 alu	Scale: 1:2 / 1:40
	English: Corner window	Edition No. 03
	Dansk: -	09.23 © 1985, 2023

© DOVISTA A/S, CVR-no. 21147583. All intellectual property rights, copyright as well as all rights in know-how vest in DOVISTA A/S.  
This drawing may not be reproduced, stored, or transmitted in any form by any means (electronic, mechanical, photocopying, recording or otherwise)  
without the prior written consent of DOVISTA A/S. This drawing is to be used only for the purposes specified by DOVISTA A/S and for no other purpose.  
We reserve all rights to change the product and product range without notice.

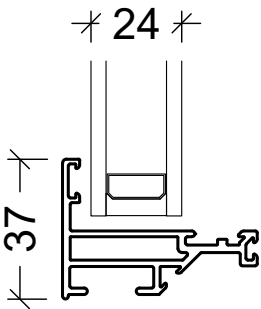
Frame and post variants



Primary sash profiles

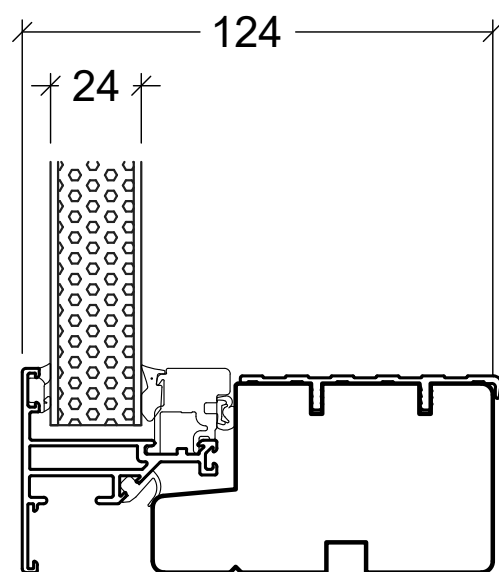


Secondary sash profiles for VELFAC 200 alu

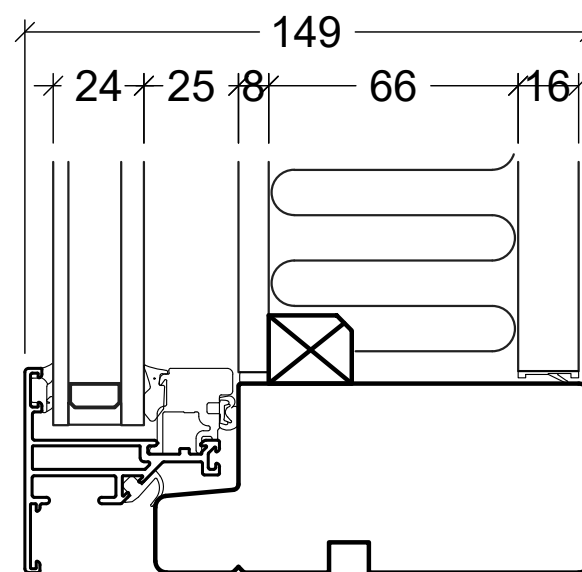


Selection for Domestic Projects

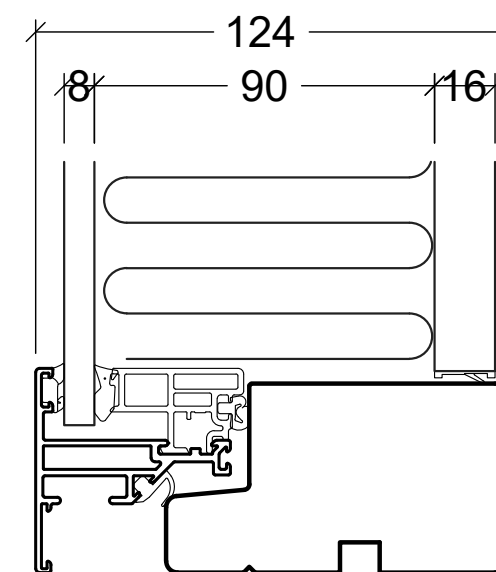
<b>VELFAC®</b> VELFAC is a trademark of DOVISTA A/S	System: VELFAC 200 alu	Scale: 1:2 / 1:40
	English: Frame and sash variants	Edition No. 03
	Dansk: -	09.23 © 1985, 2023
© DOVISTA A/S, CVR-no. 21147583. All intellectual property rights, copyright as well as all rights in know-how vest in DOVISTA A/S. This drawing may not be reproduced, stored, or transmitted in any form by any means (electronic, mechanical, photocopying, recording or otherwise) without the prior written consent of DOVISTA A/S. This drawing is to be used only for the purposes specified by DOVISTA A/S and for no other purpose. We reserve all rights to change the product and product range without notice.		



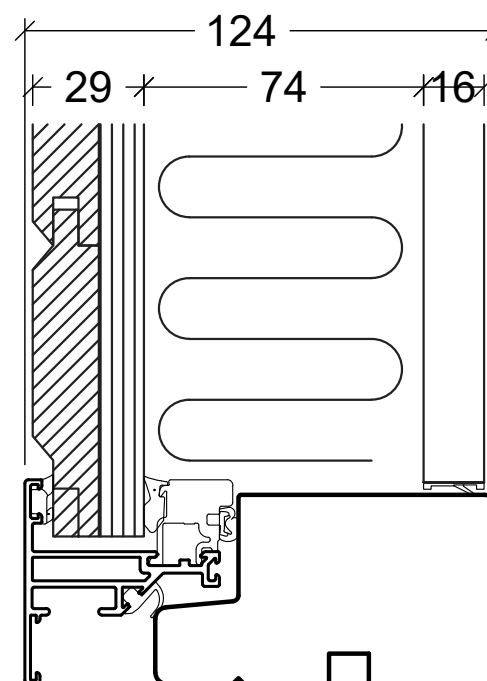
Sandwich panel, 90mm frame



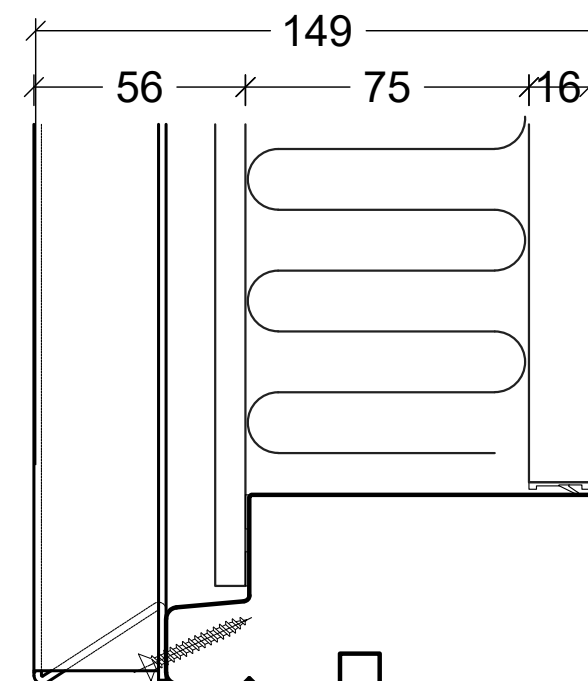
Shadowbox, 115mm frame



Non ventilated panel, 90mm frame




Cedar panel, 90mm frame



VELFAC 200 alu Rainscreen panel, 115mm frame

Panels are available with all frame depths, 90mm, 115mm and 140mm

Selection for Domestic Projects

 VELFAC is a trademark of DOVISTA A/S	System: VELFAC 200 alu	Scale: 1:2 / 1:40
	English: Panels	Edition No. 03
	Dansk: -	09.23 © 1985, 2023

© DOVISTA A/S, CVR-no. 21147583. All intellectual property rights, copyright as well as all rights in know-how vest in DOVISTA A/S. This drawing may not be reproduced, stored, or transmitted in any form by any means (electronic, mechanical, photocopying, recording or otherwise) without the prior written consent of DOVISTA A/S. This drawing is to be used only for the purposes specified by DOVISTA A/S and for no other purpose. We reserve all rights to change the product and product range without notice.